



## HEMATOLOGY

### Staining Results for Blood Smear Staining with SlideInk® Plus and COLORGRAM® Kit

24.02.2020

# STAINING SYSTEM FOR HEMATOLGY

SlideInk® Plus and COLORGRAM® Kit



## SlideInk® Plus

Semi-automated blood smear staining system



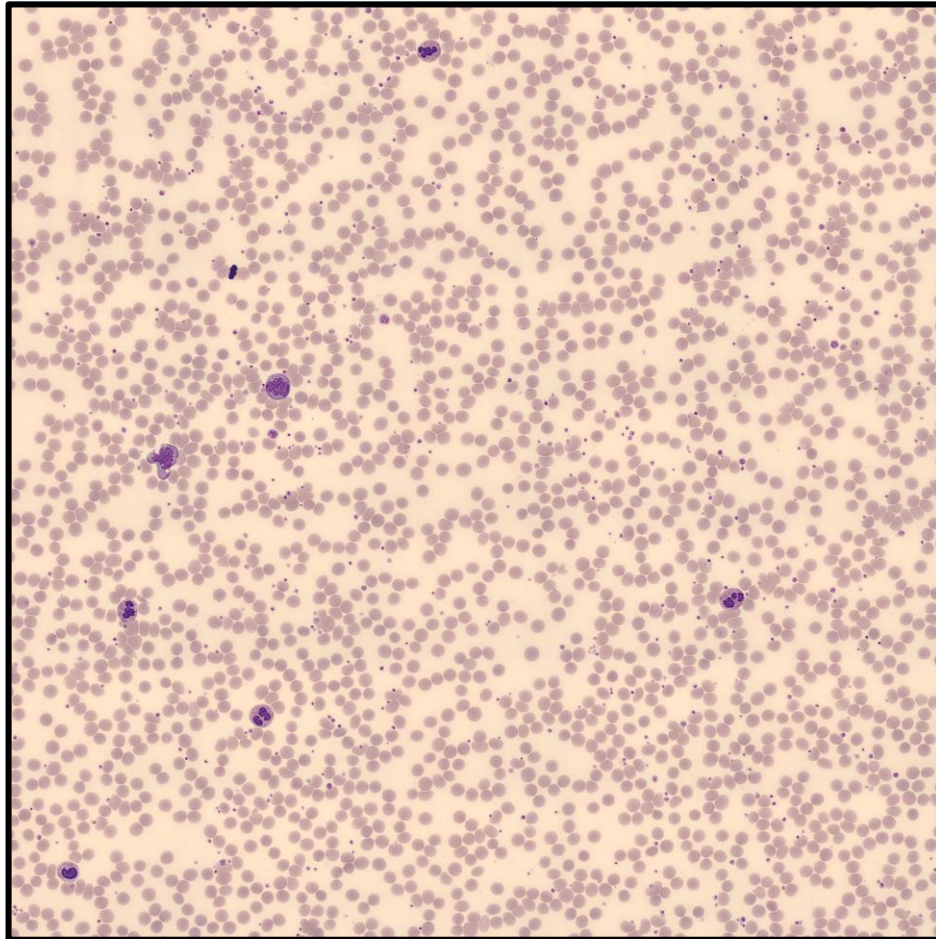
## COLORGRAM® Kit

Master-Mix for Wright, Giemsa and Leishman Staining

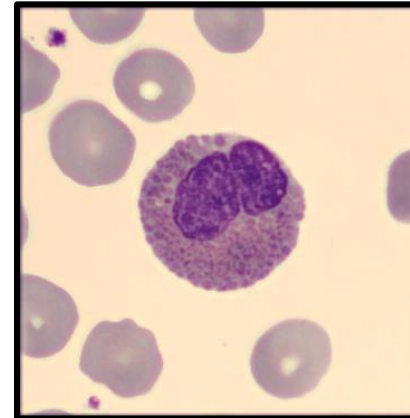
# STAINING RESULTS

using the COLORGRAM® Kit stain & the SlidInk® Plus automated staining system

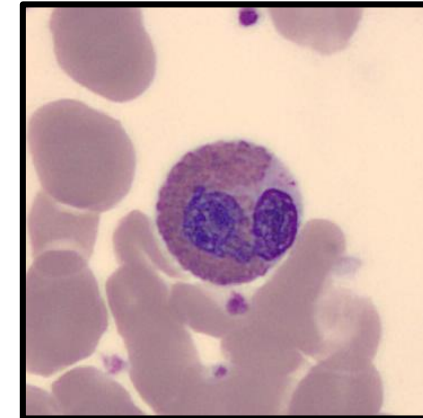
**Overview Example**



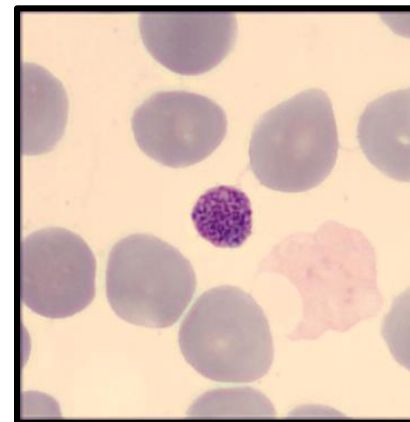
**Eosinophil I.**



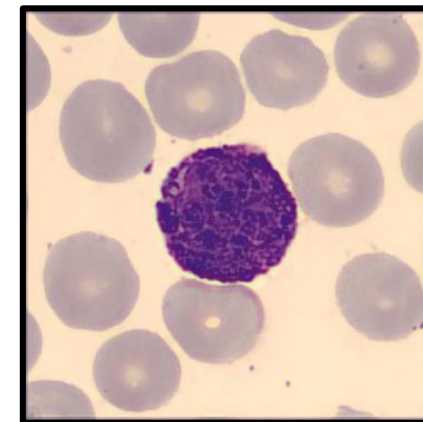
**Eosinophil II.**



**Platelet**



**Basophil**

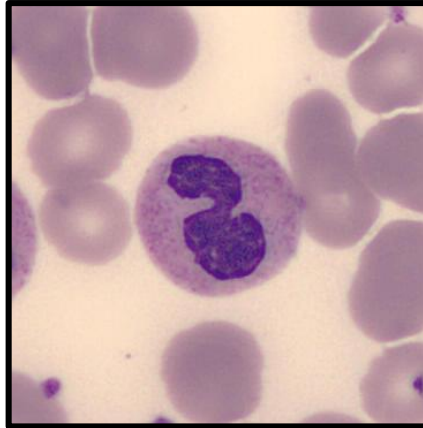




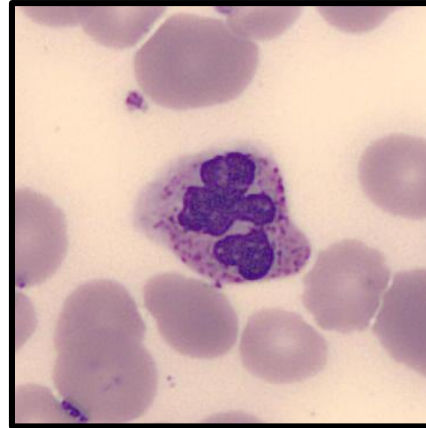
# STAINING RESULTS

using the COLORGRAM® Kit stain & the SlidInk® Plus automated staining system

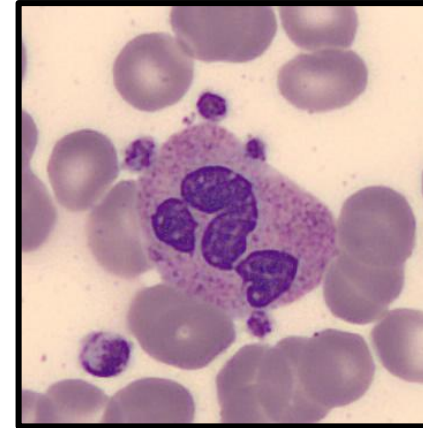
**Neutrophil I.**



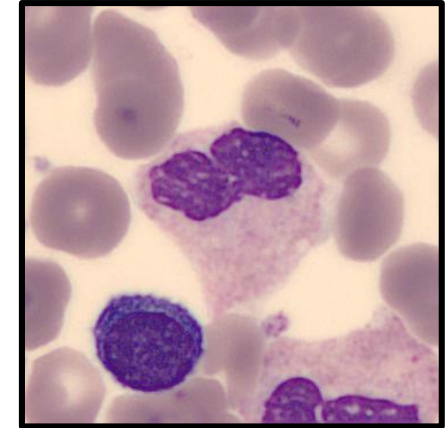
**Neutrophil II.**



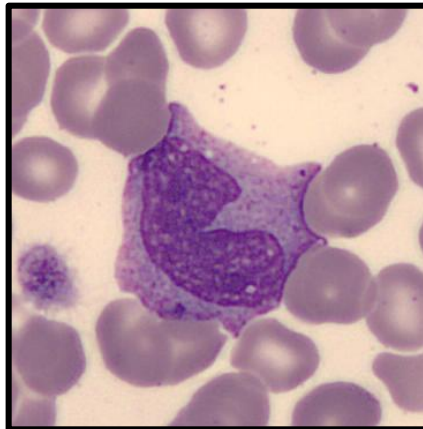
**Neutrophil III.**



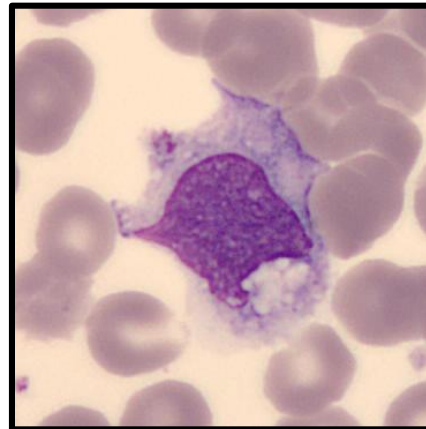
**Neutrophil IV.**



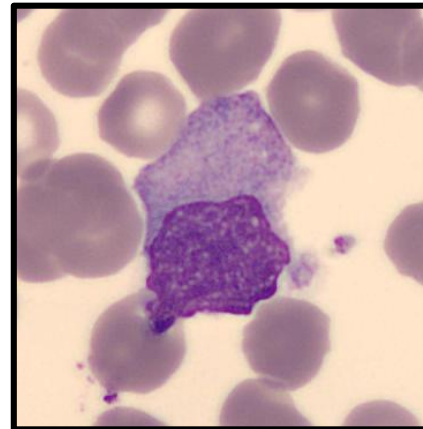
**Monocyte I.**



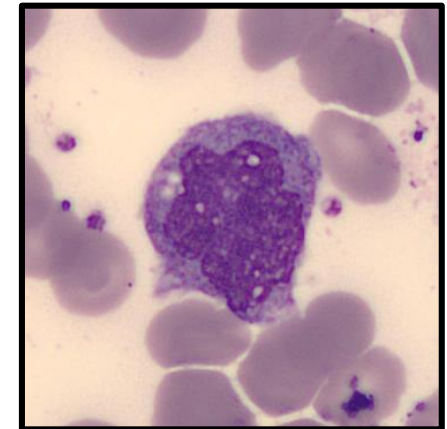
**Monocyte II.**



**Monocyte III.**



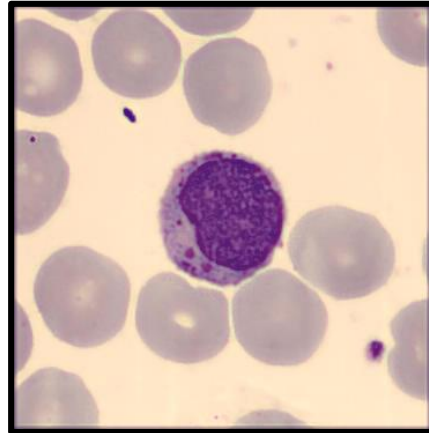
**Monocyte IV.**



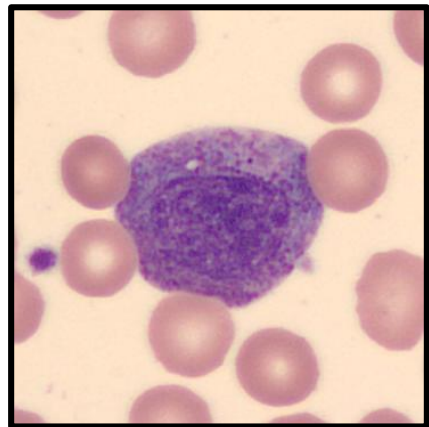
# STAINING RESULTS

using the COLORGRAM® Kit stain & the Slidelink® Plus automated staining system

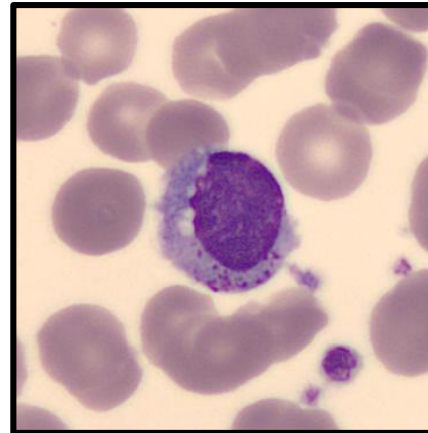
**Lymphocyte I.**



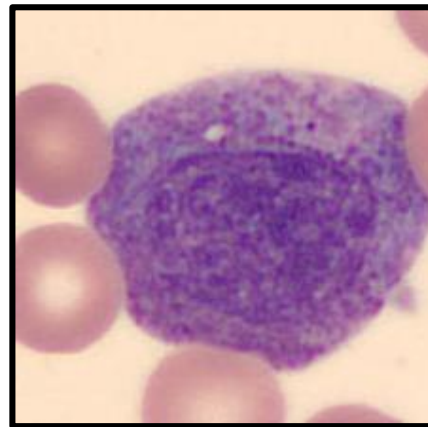
**Immature Cell I.**



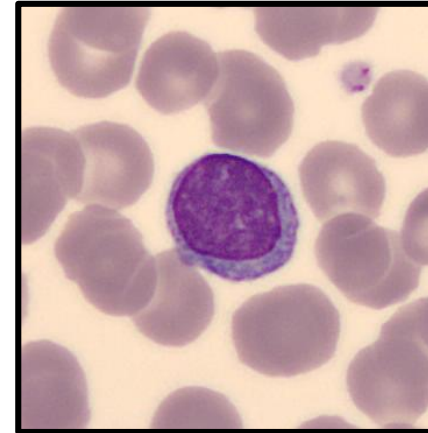
**Lymphocyte II.**



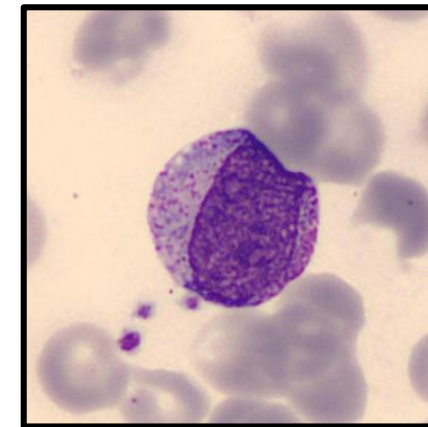
**Immature Cell  
magnification**



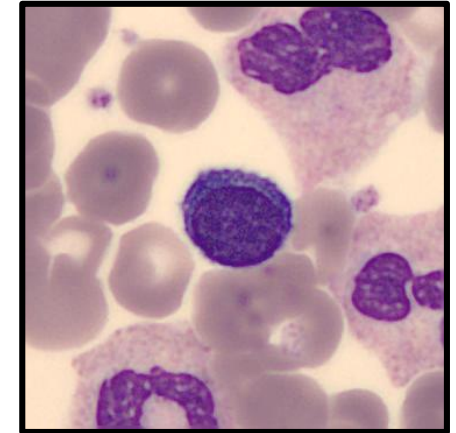
**Lymphocyte III.**



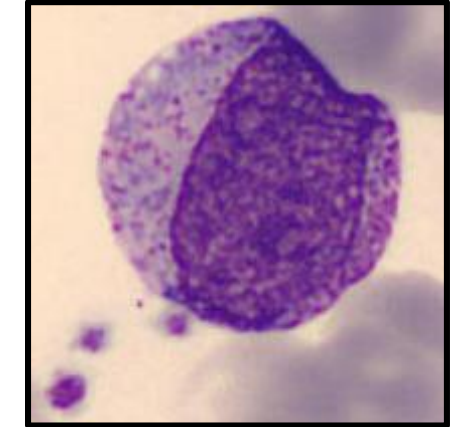
**Immature Cell II.**



**Lymphocyte IV.**



**Immature Cell  
magnification**



# CONTACT INFORMATION

---

## Address

Bio-Gram Diagnostics Germany  
Technology Center Ludwigshafen  
Donnersbergweg 1  
67059 Ludwigshafen  
GERMANY

## Contact

email: [sales@bio-gram.de](mailto:sales@bio-gram.de)  
phone: +49 621 490 844 50  
fax: +49 621 490 844 51  
website: [www.bio-gram.de](http://www.bio-gram.de)

